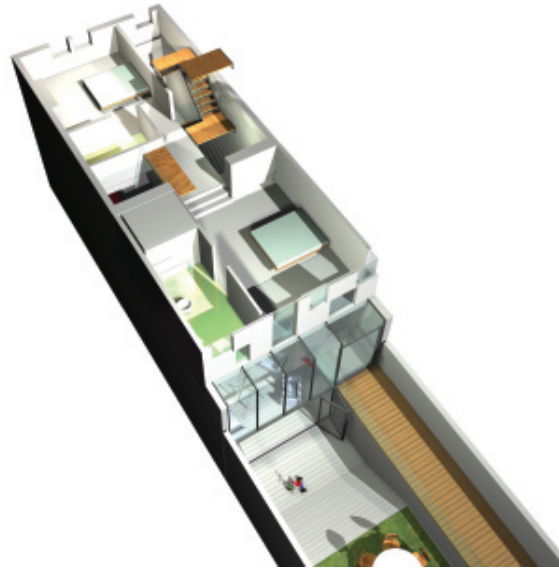


## private house, **balham**

This project is for a private client in London who wanted to redevelop their existing house to create an exciting contemporary yet homely living environment for their family.

Our design reworks the current arrangement of the spaces within the existing volume of the house in combination with the addition of a new three storey rear extension to create an exciting and unexpected light filled family home with a warm heart, greater connection with the garden and dramatic spaces to experience and views to enjoy.

We have ordered the space to create a dramatic entrance sequence to the house with a treble height entrance hall and feature stair, an unusual double height open plan living/dining area spread over the ground and basement floors, self contained basement accommodation, a much more spacious master bedroom suite separated from the rest of the floor by its bridge entrance and a reconfigured 2nd floor for the children's bedrooms.



Top right: View from garden  
Top left: cut away view of first floor  
Right: cut away view of ground floor  
Far right: long sectional view



**threefold**architects  
making design architecture